




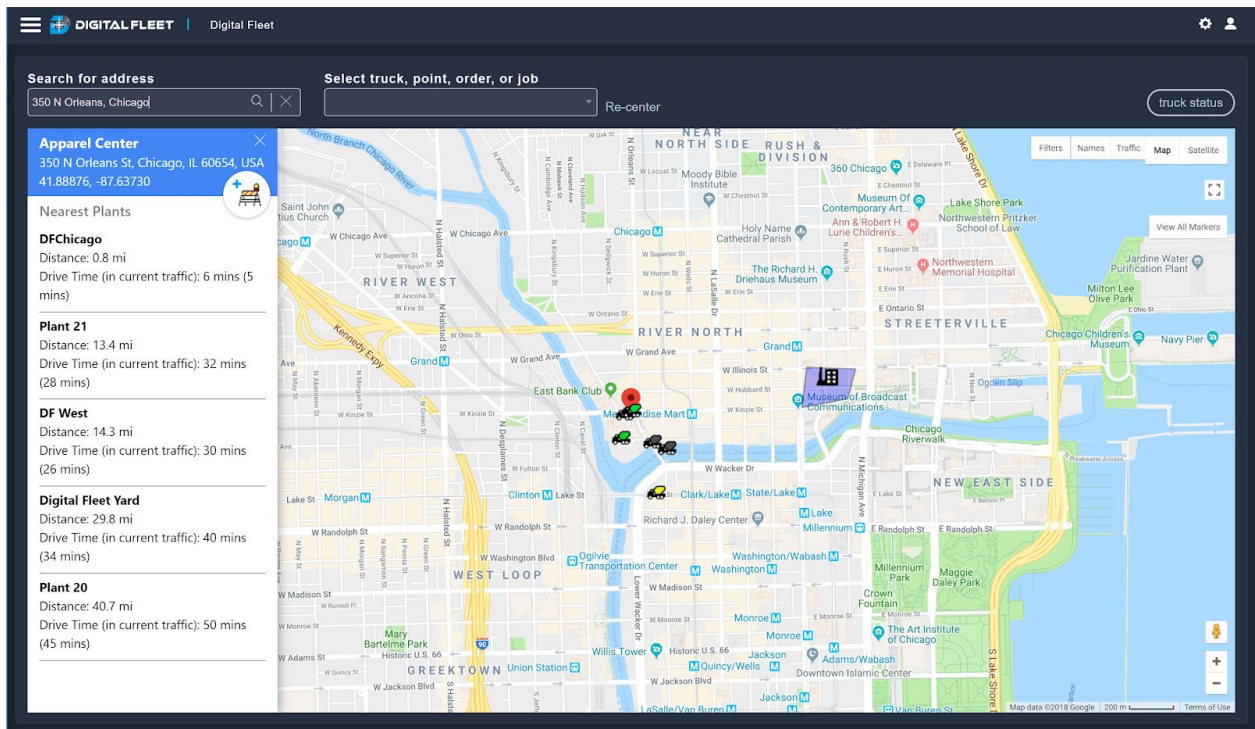
Last updated: May 21, 2018

The Digital Fleet platform allows for job sites to be created manually. This functionality is generally used for locations that do not have a distinct address (i.e. farm, new development, etc). The purpose of this document is to explain how to create a job site and how this job site integrates with the truck tickets received from dispatch.

Creating a Job Site

To manually create a job site on the Digital Fleet map, use the [Address Search](#) functionality to

select the desired location on the map and select the  button.



This will open a job site input window for entering the **Order Number** (required), **Job Site Name**, **Job Description**, **Expiration**, and **Job Radius**.

Please reach out to us at support@digitalfleet.com if you have any questions.

Job Site Editor
✕

Order Number *

Job Site Name

Job Description

Expiration *

--Select canned expiration duration--

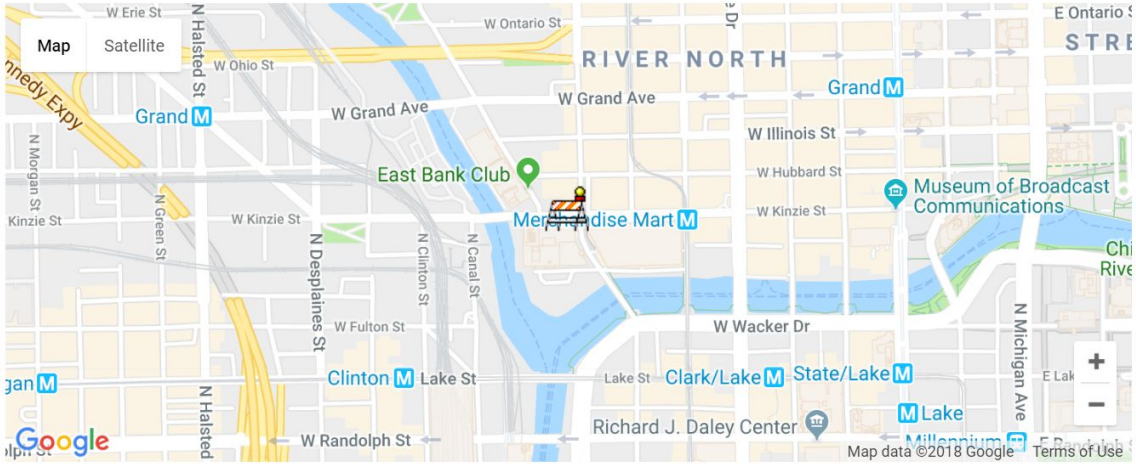
Job Radius (Ft) *

Latitude

41.88876

Longitude

-87.63730



Order Number (required): The order number assigned in the dispatch software. If this does not match to the order number in the dispatch software the Digital Fleet software will not be able to use the location.

Job Site Name (optional): Desired job site name for order.

Job Description (optional): Desired job description.

Expiration (default = end of day entered): The job site will be removed from the map at midnight of the expiration date.

Job Radius (default = 1200 feet): The radius for the job site. Minimum value = 100 feet and Maximum value = 3000 feet

Latitude (not editable): Automatically filled in based on location. The job site icon can be dragged to update the latitude.

Longitude (not editable): Automatically filled in based on location. The job site icon can be dragged to update the longitude.

Dispatch Integration

In order for the manually created job sites to be associated with a truck, a ticket must be assigned from the dispatch software. For this association, the **Order Number** in the dispatch software must match the **Order Number** for the manually created Digital Fleet job site.

When a ticket is sent to Digital Fleet, the manually entered job site's location will be used instead of the address provided with the ticket. If a latitude and longitude are included with the ticket, this latitude and longitude will overwrite the location of the manually created job site.