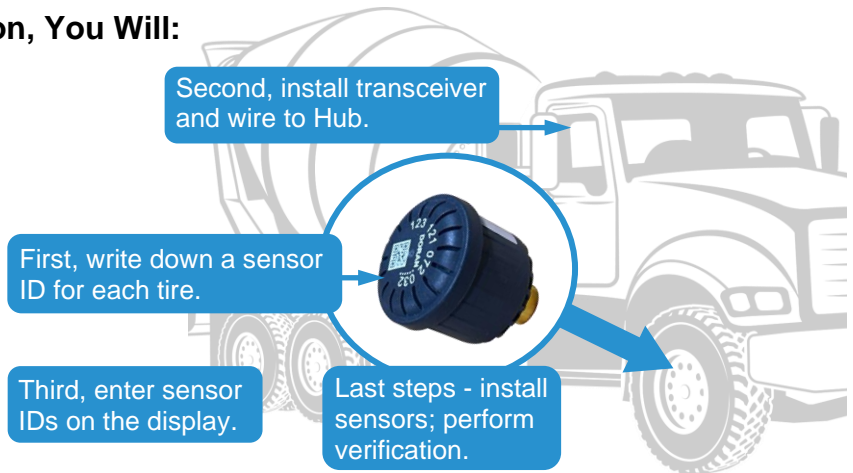


Tire Pressure Monitoring Kit

Installation – Tire Pressure Monitoring Kit

Tire Sensors are installed to show tire pressure, temperature, and leak rate alerts on the driver's tablet and on the DF+ web platform.

During Setup and Installation, You Will:



SETUP – Assign Sensors to Tires

Before installing any sensors on the truck tires, determine which sensor will go to each tire.

IMPORTANT: Installing sensors **before** they are assigned on the TPMS display causes a 9 min. delay for the system to recognize the sensor.

Step 1. Write down a sensor ID for each tire:



1.1. Select a sensor.

1.2. Locate the **last 3 digits** of the sensor ID.



1.3. On the paper provided, write the **last 3 digits** in one of the tire positions for your truck (number of tires varies by truck).

Assign sensors to truck tires per axle.

032			
Axle 1	2	3	4

1.4. Repeat for **each** sensor, until **all tires** on the truck are assigned a sensor.

032	325	043	357
	321	891	
	353	382	
Q46	496	371	074
Axle 1	2	3	4

1.5. Save this paper to assign sensors on the display in a later step.

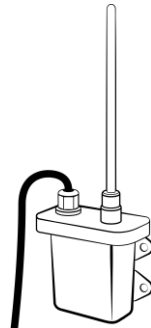
DO NOT install sensors on tires yet, install antenna first.

INSTALLATION

Install Antenna and Transceiver/Screen - BEFORE installing sensors on tires.

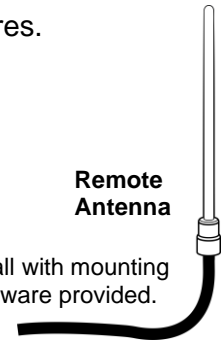
Step 2. Install remote antenna (antenna w/cable) where it receives the best signal from all tire sensors—install antenna in cab, behind driver seat, in as high and open position as possible.

Note: If antenna is screwed directly to the transceiver (or TPMS display), mount the assembly in an open position behind the driver seat as described above.



Antenna on Transceiver
Mount **display** next to transceiver.

Some models have the transceiver built into the display.



Remote Antenna

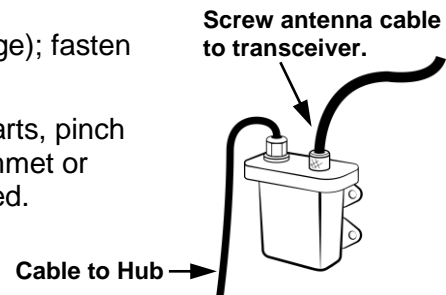
Install with mounting hardware provided.

2.1. **When a remote antenna is used**, install the transceiver (and TPMS display) next to the Hub, typically found in the dash (Rear Discharge Mixers) or mounted on back cab wall (Front Discharge Mixers).

2.2. Route antenna cable to the transceiver (see image); fasten cable along the route as needed.

Important: Route cable safely—avoid moving parts, pinch points, and sharp edges. Use a grommet or bushing on pass-thru holes as needed.

2.3. Wire transceiver to the hub and Mixer CAN, see wiring section below.



TRANSCEIVER WIRING

**HUB
BASE-100**



Wire Transceiver to Hub and Mixer CAN (250k baud required)

Step 3. Route transceiver cable to the Hub.

Important: Route cables safely—avoid moving parts, pinch points, and sharp edges. Use a grommet or bushing on pass-thru holes as needed.

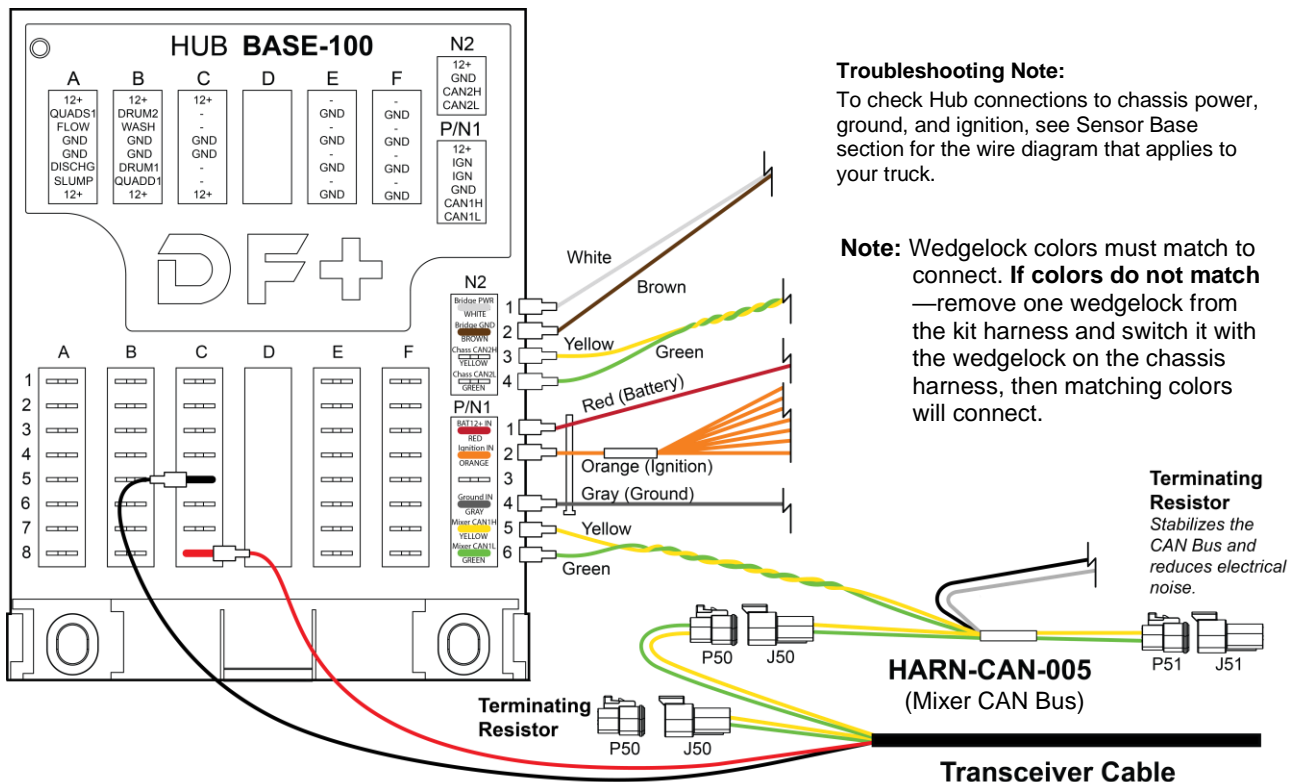
Step 4. Connect red and black transceiver wires to Hub (see diagram below).

- 4.1. Strip both red and black wires—crimp a female terminal (GEN-101) on each wire.
- 4.2. Plug red and black wires into Hub.

Step 5. Connect transceiver cable to the Mixer CAN Bus (see diagram below).

- 5.1. Plug the two 3-pin connectors from transceiver cable into HARN-CAN-005 (either P50/J50 or P51/J51).
- 5.2. A terminating resistor must be plugged into remaining connector on harness.

Important: See note in image below on wedgelock colors.



Troubleshooting Note:
To check Hub connections to chassis power, ground, and ignition, see Sensor Base section for the wire diagram that applies to your truck.

Note: Wedgelock colors must match to connect. **If colors do not match** —remove one wedgelock from the kit harness and switch it with the wedgelock on the chassis harness, then matching colors will connect.

Terminating Resistor
Stabilizes the CAN Bus and reduces electrical noise.

Step 6. Double check that all wiring connections are securely fastened.

Step 7. Now the transceiver has power—**verify the TPMS display is set to 250k baud rate.**

Follow manufacturers’ device instructions to locate baud rate. If necessary, change it to 250k. If additional assistance is needed, contact DF+ Support at 630.518.4606.

Assign Sensor IDs digitally on the TPMS Display - BEFORE installing sensors on tires.

Step 8. Enter each 3 digit code on the display for the predetermined tire.

Follow manufacturers’ device instructions to enter sensor IDs on TPMS display. If additional assistance is needed, contact DF+ Support at 630.518.4606.



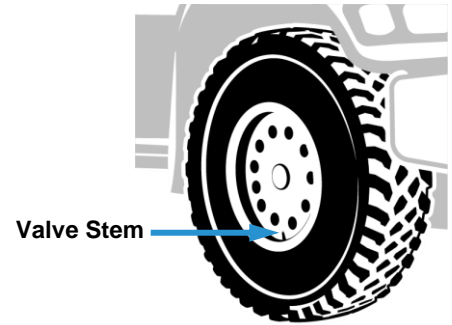
RECHECK your entries. Each ID entered on display **must match** your handwritten layout (from Step 1).

Install Sensors

Step 9. Engine must be off, but leave battery connected.

Step 10. Install the pre-assigned sensor on each tire.

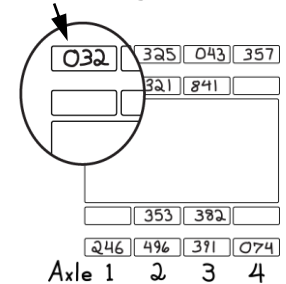
- 10.1. Remove the valve stem cap.
- 10.2. Make sure the valve stem is clean, free of debris, grease, or liquid that could compromise the sensor reading.



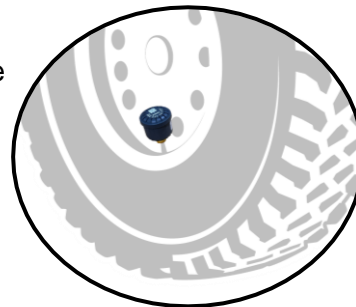
- 10.3. Select sensor **pre-assigned** for the tire, as shown (see previous page to assign sensors).



Sensor assigned to tire.



- 10.4. Install sensor on valve stem of tire until hand tight—no air should be leaking from the connection.



- 10.5. **Sensor activates upon installation;** you should see each tire pressure populate on the operator's tablet as you install a sensor.

After initial activation, tire pressure data is sent every 9 min. (*sensors are inactive between signals, to prolong battery life*).

INSTALLER VERIFICATION

Verify the operator's tablet is seeing each of the tire pressures. General images are shown in this section for reference purposes, actual screen view may vary per device.

Step 11. Navigate to tire pressure screen on the tablet.

Step 12. Make sure all tires are reading.

- 12.1. Check that all tires are reading correctly:

- If no tires are reading, check TPMS device to make sure the baud rate is set to 250K (see Step 7).
- If baud rate is set to 250k, but still, no sensors are showing up, go to Step 13 to make sure Tire Pressure Monitoring is activated for the truck.

12.2. Double check any tires not reading correctly or not showing up (showing N/A):

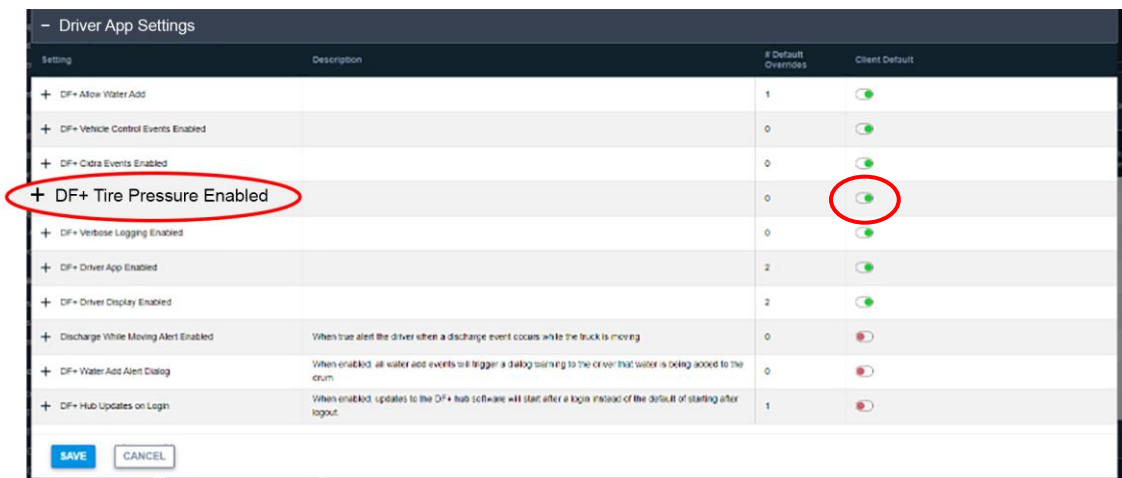


- If a sensor is not assigned on the TPMS device, it will not show up on the tablet (reference Step 1 and Step 8).
- If the sensor is not installed, it will not show up (reference Step 9 and 10).
- If sensor is assigned to a different tire, the reading will show in the wrong position (reinstall sensor on correct tire).

After initial installation, if a sensor is removed and replaced, it takes up to 9 minutes for the system to read the sensor.

Sensor activates upon installation and sends TP data every 9 min. (sensor is inactive between signals, to prolong battery life).

Step 13. Tire Pressure Monitoring should already be enabled for the truck on the Digital Fleet platform. If not, contact your company’s administrator or DF Support to enable it in the system as seen in example below.



For installation or troubleshooting questions reference the device manufacturers’ instructions, or call DF+ Support at 630.518.4606.